

USACE – ROCK ISLAND DISTRICT

Jon Klingman
Chief, Channel Maintenance Section
Operations Division
Rock Island District

February 2023



US Army Corps
of Engineers®



BUILDING STRONG®



OUTLINE

Staff

Miss

- 2022 Summary
- 2023 Dredging Projections
- Ongoing DMMP / CARS
- Upcoming DMMP / CARS

IWW

- 2022 Summary
- 2023 Dredging Projections
- Ongoing DMMP Acquisitions
- Upcoming DMMP efforts

OTHER

- Grounding Reports



US Army Corps
of Engineers



CHANNEL MAINTENANCE STAFF



Jon Klingman - Chief, Channel Maintenance Section

Matt Afflerbaugh - Channel Maintenance Coordinator
(NEPA compliance, Permits)

Matt Martin – Dredging Coordinator, Mississippi River

Chris Reger - Dredging Coordinator, Illinois River

Hydro Survey

Jimmy Maher – Supervisory Eng Tech

Chris Engelstad - Lead Eng Tech, Hydro Survey

Cory Brenner - Engineering Tech. (Departing)

Wyatt Kyarsgaard– Eng Tech

Anthony Tipsword– Eng Tech

Chance Sprout – Eng Tech

Vacant – Eng Tech

Jacob Peterson – Eng Tech

Kevin Ressie – Eng Tech (Rehire)

Project Management – Bre Popkin (Project Support
Section) DMMP and CARS Coordination



**US Army Corps
of Engineers**



MISSISSIPPI RIVER



US Army Corps
of Engineers.



2022 DREDGING SUMMARY – MISS RIVER

Total Volume Dredged = 523,000 cubic yards

2 Hydraulic Jobs - Dredge GOETZ; 142,000 yards total (55%)

17 Mechanical Jobs; 381,000 yards total

11 Jobs Gov Mech 268,000cy (70%)

6 Jobs Contract Mech 113,000cy (30%)



**US Army Corps
of Engineers**



2022 DREDGING - MISS RIVER

ROCK ISLAND DISTRICT (MVR) - CORPS OF ENGINEERS 2022 Dredging Schedule by Equipment - Upper Mississippi River

Pool	Site	River Mile	Dredging Dates Start End		Depth & Est. Quantity
Scheduled Dredging Jobs (List will change after Spring Surveys)					
11	Turkey River	608.9-609.2			11 17,567
12	Cassville Lower	604.7-605.0			11 109,055
11	Finley's Landing	596.0-596.3	11/14/22	11/29/22**	12 10,083
11	Rosebrook 2	595.1-595.6	8/5/22	8/14/22**	11 68,234
11	Rosebrook 1	594.5-595.3	5/16/22	5/17/22***	11 1,529
12	Deadman's	567.6-568.7	8/29/22	9/14/22***	11 11,731
13	Savanna Bend	538.6-539.3	8/18/22	8/27/22**	11 73,462
14	Beaver Chute	517.5			11 14,073
14	Marais Dosier	509.6-509.9			11 11,875
14	Steamboat	503.4-503.8	6/1/22	6/26/22**	11 34,186
15	Lock 14 Lower	493.1	11/7/22	11/10/22**	11 329
16	Lock 15 Lower	482.6-482.9	6/27/22	7/28/22**	11 14,455
16	Linwood to Horse Island	475.3-476.1	9/27/22	11/2/22**	11 29,045
16	Buffalo DMPP Entrance	471.4	6/9/22	6/18/22**	7 11,724
16	Montpelier	469.2-469.5			11 10,133
16	Hershey	461.1-461.3			11 5,039
16	Lock 16 Upper	458.7-458.8			11 5,943
17	Lock 16 Lower	456.5-456.7			11 13,371
18	Willow Bar Island Excav. (off load)	425.5			100,000
18	Willow Bar Entrance	425.5	8/20/22	8/22/22**	7 3,338
18	Cherokee	424.3-424.5	8/20/22	9/21/22**	11 24,810
18	Oquawka Bend	414.6-415.1	6/28/22	8/18/22**	11 37,423
19	Burlington Bluff	401.8-402.4	11/3/22	11/28/22***	11 25,041
19	Kemp's Landing Lwr.	396.9-397.1			11 15,000
21	Howards	338.7-339.1	9/30/22	10/15/22**	11 21,215
21	LaGrange	336.0-336.2	7/26/22	8/19/22**	11 33,791
21	Hogback/Lonetree	331.5-331.9	6/22/22	7/25/22**	11 52,817
22	NEMO	319.7-320.4			11 34,323
22	Cave Hollow	304.9-305.2	3/15/22	4/20/22**	11 44,995
24	Lock 22 Lower	300.4-300.6	8/23/22	9/13/22**	11 24,616

MVR Strike

Mar 15 to Nov 28 (one unit assisted MVS Mid September)

Dredge Goetz

Aug 5 to Aug 27 (deferred additional work to release to MVS)

Contract Mechanical

Primary June 9 – Nov 29

Secondary Not mobilized

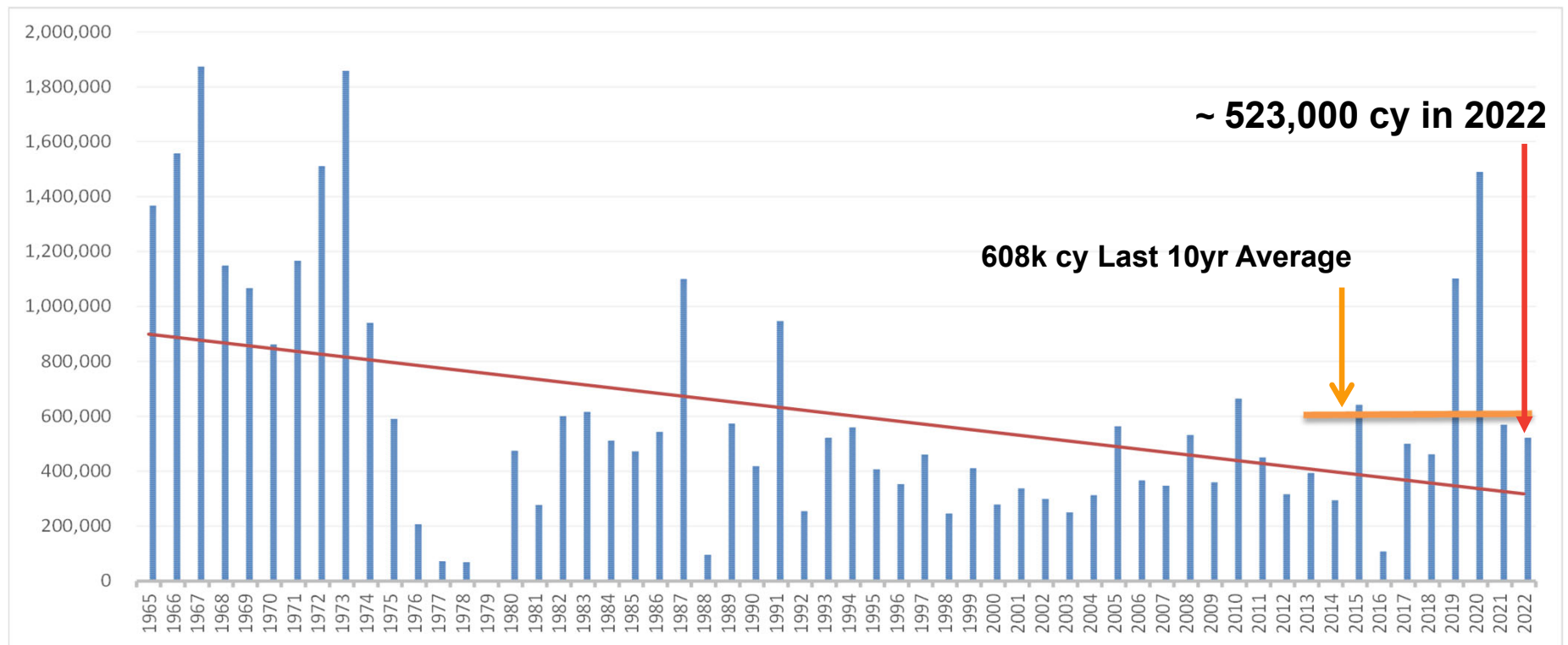
- 30 Dredging locations identified
- 19 Completed Locations
- 11 jobs either deferred or conditions improved and dredging was not required



US Army Corps
of Engineers



MISSISSIPPI RIVER HISTORIC DREDGING VOLUMES



US Army Corps
of Engineers.



ROCK ISLAND DISTRICT (MVR) - CORPS OF ENGINEERS
2023 Dredging Schedule by Equipment - Upper Mississippi

12-Jan-23

Pool	Site	River Mile	Dredging Dates Start End	Depth & Est. Quantity	Equip.	Placement Site	Placement Type	Cat.
Scheduled Dredging Jobs (List will change after Spring Surveys)								
11	Turkey River	608.9-609.2		11 15,000	GM	TBD	TBD	R
12	Cassville Lower	604.7-605.0		11 110,000	GH	TBD	TBD	R
12	Deadman's	567.6-568.7		11 10,000	GM	566.6-566.9L	Bankline	R
14	Beaver Chute	517.5		11 15,000	GM	516.8-517.3L	Bankline	R
14	Marais Dosier	509.6-509.9		11 15,000	CM	503.5-504.1R	Bankline	R
14	Steamboat	503.4-503.8		11 15,000	GM	502.7-503.1	Thalweg	R
16	Montpelier	469.2-469.5		11 15,000	CM	469.4-469.9L	Bankline	R
16	Hershey	461.1-461.3		11 5,000	CM	461.4-461.6R	Bankline	R
16	Lock 16 Upper	458.7-458.8		11 5,000	CM	461.4-461.6R	Bankline	R
17	Lock 16 Lower	456.5-456.7		11 10,000	CM	456.2-456.6	Bankline	R
18	Willow Bar Island Excav. (off load)	425.5		100,000	GH	Keithsburg Site 4	Upland DMMP Site	N/A
19	Burlington Bluff	401.8-402.4		11 10,000	GM	399.6-399.9L	Bankline	R
19	Kemp's Landing Lwr.	396.9-397.1		11 15,000	GM	Kemps RM 397.8-398.1L	Bankline	R
21	Howards	338.7-339.1		11 10,000	GM	339.0-339.5L	Bankline	R
22	NEMO	319.7-320.4		11 30,000	GH	NEMO DMMP Site	Upland DMMP Site	R
22	Cave Hollow	304.9-305.2		11 10,000	GM	Head of Harris Island 305.5L	Open Water	R

* Currently operating at this job. ** Dredging completed ***Dredging Bankline or Thalweg placement event would be coordinated with the OSIT.

Total quantities by equipment:

Government Hydraulic - GOETZ (GH) = 240,000
 Government Mechanical - (GM) = 100,000
 Contract Hydraulic - (CH) = 0
 Contract Mechanical - (CM) = 50,000
 Total Dredging = 390,000

^E = Emergency
 I = Imminent Closure
 R = Routine Dredging

Deferred Dredging =

INITIAL 2023 MISS RIVER DREDGE PROJECTIONS

Cassville	604.7-605.0
Deadman's	567.6-568.7
Marais Dosier	609.6-609.9
Steamboat	503.4-503.8
Montpelier	469.2-469.5
Burlington Bluff	401.8-402.4
* Willowbar Offload	425.5



**US Army Corps
of Engineers**



MISSISSIPPI RIVER DMMP / CARS



**US Army Corps
of Engineers.**



UMR (POOL 11) TRANSFER SITE, RM 594.0 - COMPLETED!



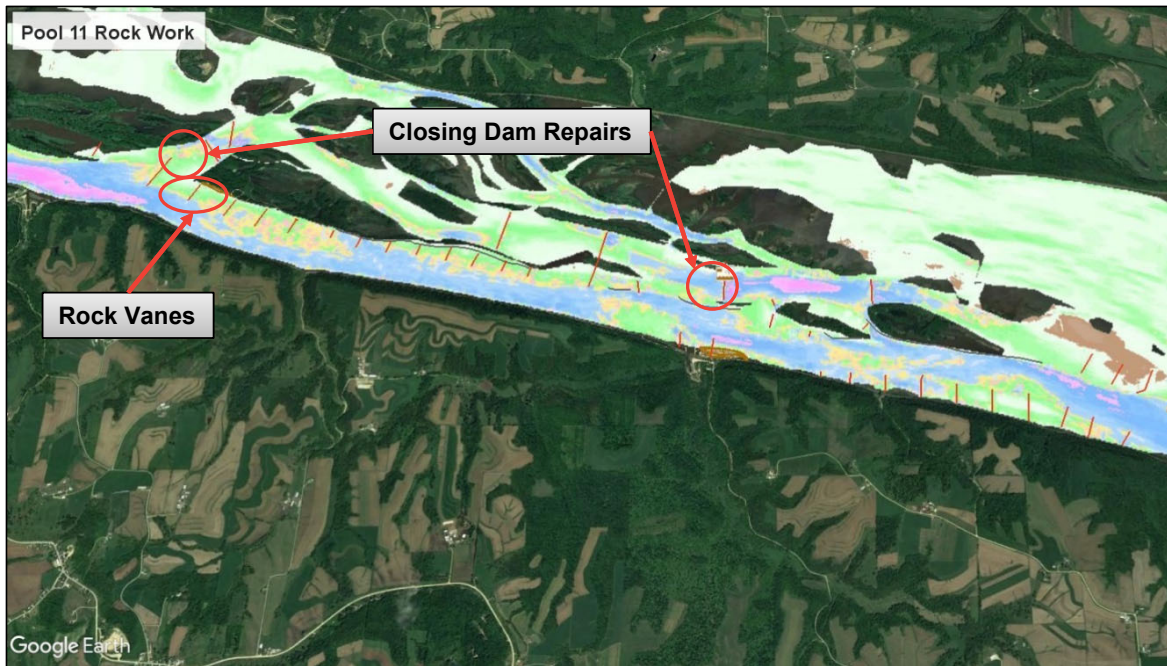
- Perimeter berms and mitigation areas capped with fines, final grading completed, mitigation seeding completed.
- 68,000 cubic yards placed from the Rosebrook cut August 2023
- 200,000 yards capacity



US Army Corps
of Engineers



UMR (POOL 11) 595.0 HURRICANE ISLAND REACH ROCK WORK - CARS



- Degraded rock structures not functioning as originally built
- Provide channel stability and reduce shoaling
- **Construction anticipated in 2023**

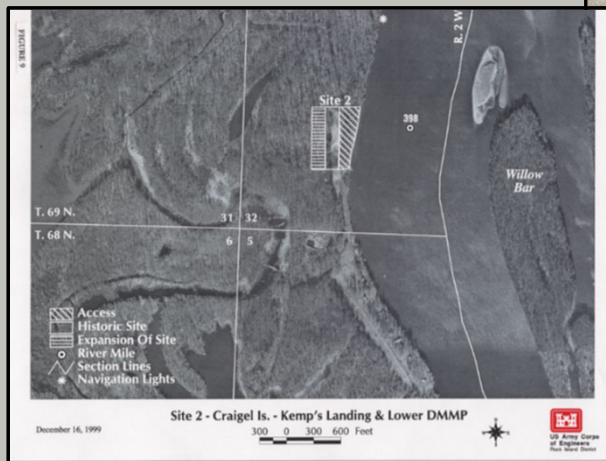


US Army Corps
of Engineers



UMR (POOL 19) 398.0, KEMPS-CRAIGEL DMMP, SITE 2

- Site constructed Fall 2022 / Winter 2023
- Ready for mechanical use
- Capacity: 77,000 CY

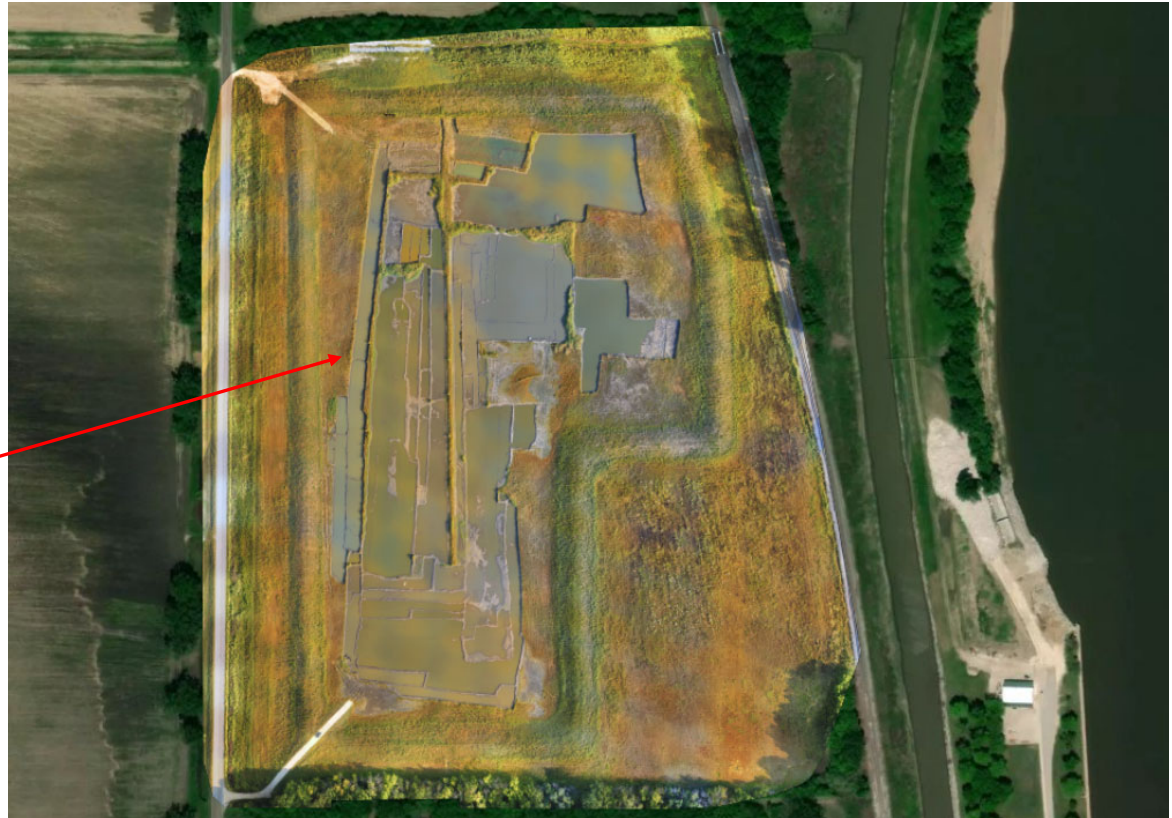
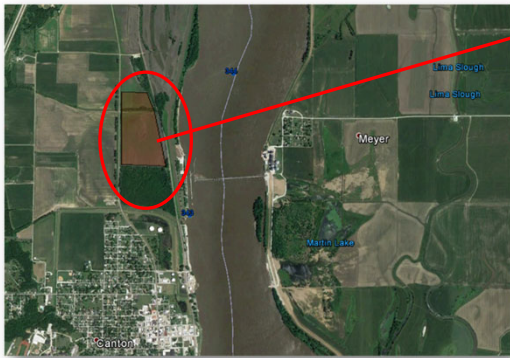


US Army Corps
of Engineers



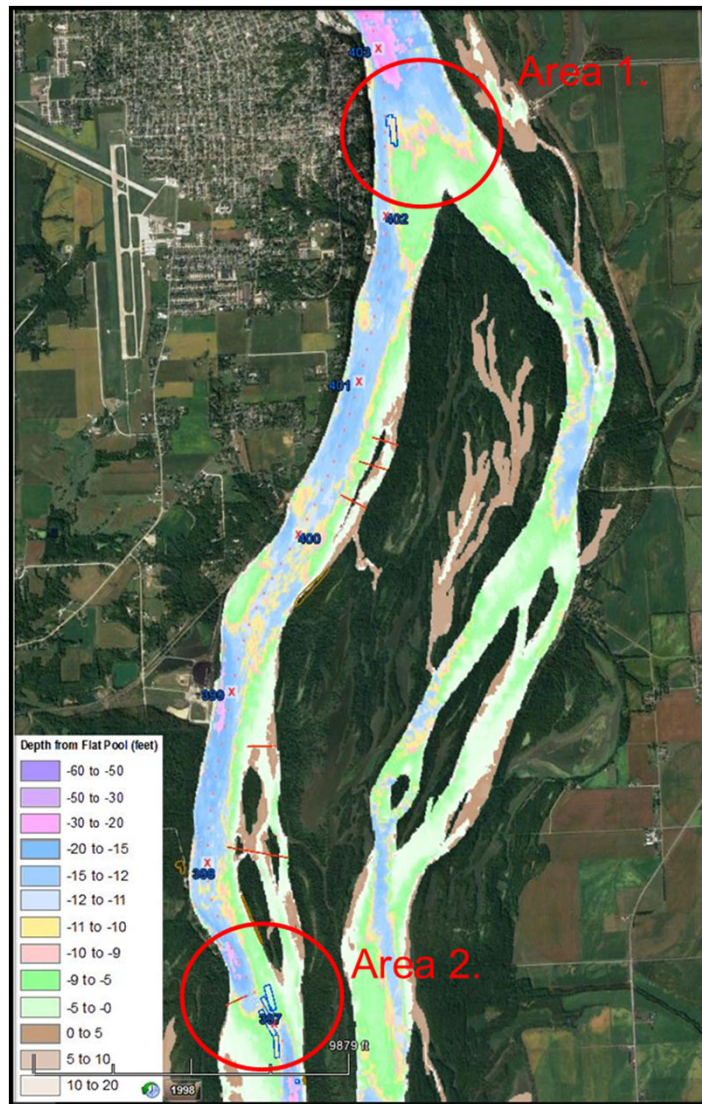
UMR (POOL 20) LOCK #20 UPPER

- Construction completed March 2022 – Ready for use
- Capacity: 440,000 CY



US Army Corps
of Engineers





UMR (POOL 19) - BURLINGTON BLUFF / BURLINGTON ISLAND LIGHT

PDT Kicked-off December 2022. First iteration of potential features and hydraulic modeling underway.

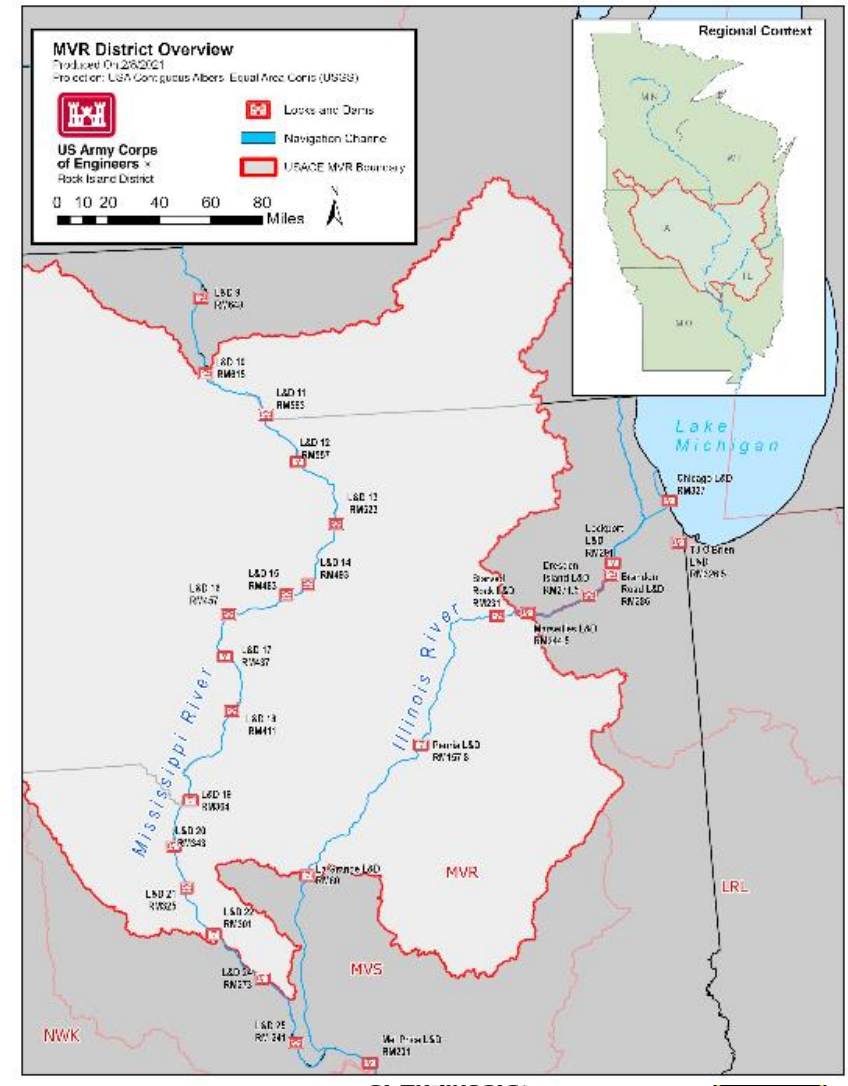
Project Features:

- Area 1 concerns: primary current shifts from navigation channel to side channel
- Area 2 concerns: sediment migrates across navigation channel, requires increasing dredging quantities & frequencies
- Team will evaluate options:
 - Identify and study problems
 - Potential solutions
 - Restore existing rock structures
 - Modify existing rock structures
 - Build new rock structures
 - Others ideas



UMR – PRELIMINARY ASSESSMENT

- Preliminary Assessment kick off in Q3, 2023
- Will cover MVR's AOR of UMR
- Anticipate recommendation for a DMMP



ILLINOIS RIVER



US Army Corps
of Engineers.



FY 2022 DREDGING SUMMARY – IWW

Total Volume Dredged = 253,000 cubic yards

**4 Hydraulic Jobs – Contract
176,000 cy (69%)**

**12 Mechanical Jobs - Strike Crew
78,000 (31%)**

*** Mechanical contract not mobilized.**



**US Army Corps
of Engineers**



2022 DREDGING SUMMARY – IWW

ROCK ISLAND DISTRICT (MVR) - CORPS OF ENGINEERS

2022 Dredging Schedule by Equipment - Illinois Waterway

Pool	Dredge Cut Name	River Mile	Dredging Dates		Depth & Est. Quantity	Equip.
			Start	End		
LaGrange	Beardstown **	87.0-8733	10/17/22	11/3/22	8,589	GM
LaGrange	Otter Creek	110.9-111.8			37,280	CH
LaGrange	Bath Chute	113.1-114.1			41,133	CH
LaGrange	Havana upper/Quiver Island	120.5-121.4			55,001	CH
LaGrange	Duck Island	135.3-135.5			9,809	GM
LaGrange	Copperas Creek Lower	136.0-136.2			5,569	GM
LaGrange	Copperas Creek **	136.2-136.7	10/28/22	11/6/22	36,443	CH
LaGrange	Coon Hollow Island ***	140.9-141.3	8/8/22	suspended	28,151	GM
LaGrange	Lancaster Landing **	144.5-144.6	11/10/22	11/19/22	3,915	GM
LaGrange	Kingston Mines **	145.0-146.0	10/15/22	10/25/22	59,296	CH
LaGrange	Mackinaw River 3 (CFI)	147.0-147.3	11/28/22		2,612	GM
LaGrange	Mackinaw River 2 **	147.7-148.0	9/29/22	10/14/22	54,573	CH
LaGrange	Mackinaw River 1 ***	147.7-148.0	1/4/22	1/10/22	3,903	GM
LaGrange	Pekin Bend (wiggles)	150.4-150.8			159,362	CH
LaGrange	Peoria Lock lower guide wall**	157.7	8/19/22	8/19/22	925	GM
LaGrange	Peoria Lock lower 2	157.7			1,549	GM
Peoria	Upper Henry Island	194.3-194.6			11,000	GM/CM
Peoria	Hennepin Power				18,362	GM
Peoria	Clark Island **	215.4-216.0	11/11/22	11/20/22	26,106	CH
	Deer Park Light	228.0-228.5	12/13/22	12/15/22	2,200	GM
Peoria	Starved Rock Lower **	230.7-230.9	6/27/22	7/27/22	6,000	GM
Starved Rk	Delbridge Island **	232.2-232.6	1/19/22	3/15/22	11,439	GM
Starved Rk	Bulls Island upper **	241.5-241.6	6/7/22	6/23/22	6,182	GM
Starved Rk	Bulls Island				6,000	GM
Starved Rk	Vermillion River				40,000	CH
Starved Rk	Marseilles Lower	244.2-244.3			6,000	GM
Marseilles	Grist Island **	258.6-258.9	3/21/22	3/31/22	7,075	GM

* Currently operating at this job. ** Dredging completed *** Dredging suspended.

MVR Strike

January 4 to December 15

Contract Hydraulic

September 29 to November 20

Contract Mechanical

Secondary Not mobilized

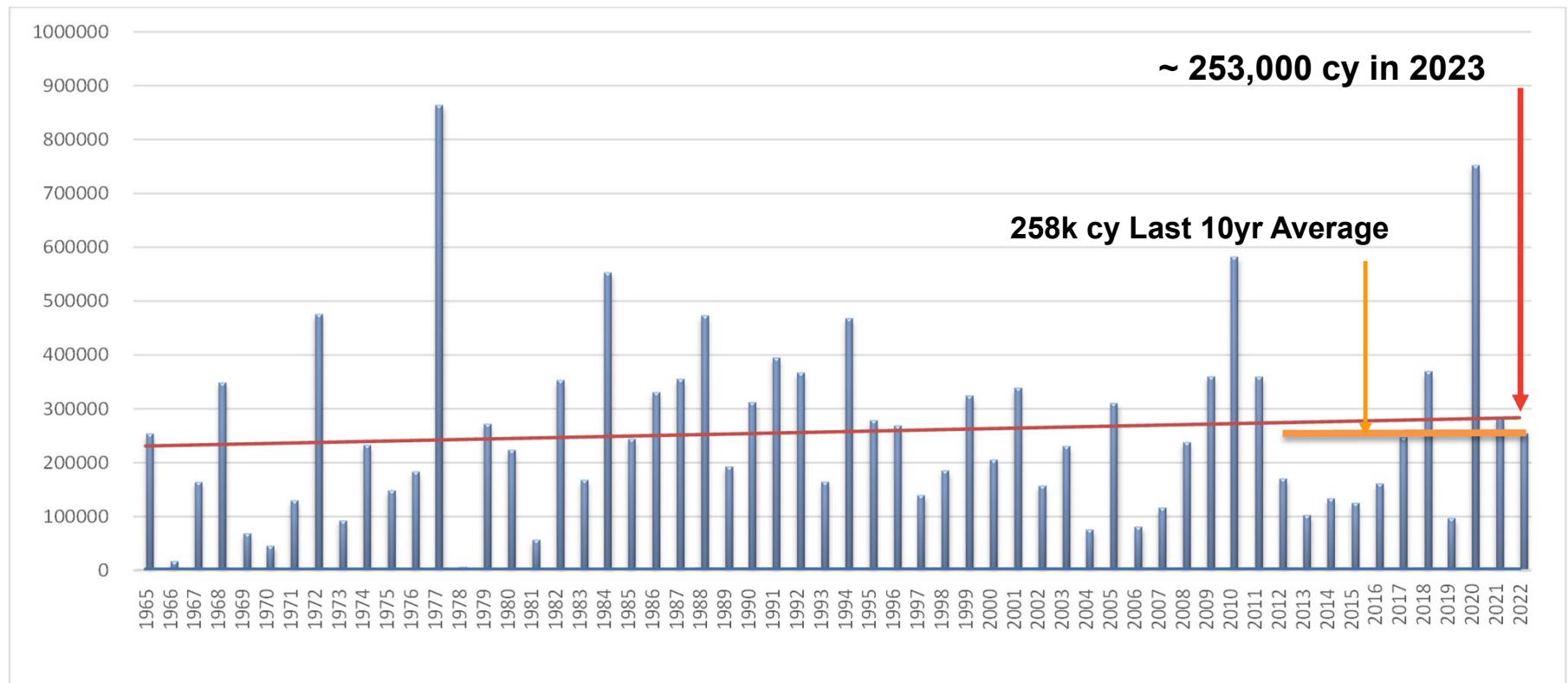
- 24 Dredging locations identified
- 12 Completed Locations
- 1 Dredging job suspended
- 11 Jobs either deferred or conditions improved and dredging was not required



US Army Corps
of Engineers



ILLINOIS RIVER HISTORIC DREDGING VOLUMES



US Army Corps
of Engineers



INITIAL 2023 IWW DREDGE PROJECTIONS

ROCK ISLAND DISTRICT (MVR) - CORPS OF ENGINEERS

2022 Dredging Schedule by Equipment - Illinois Waterway

19-Jan-22

Pool	Dredge Cut Name	River Mile	Dredging Dates Start End		Depth & Est. Quantity	Equip.	Placement Site	Placement Type	Dredging Notice #	Job Order #	Cat.^
LaGrange	Havana upper/Quiver Island	120.5-121.3			55,000	CH	120.2-121.5 R	Bankline			R
LaGrange	Mackinaw River ***	147.7-148.0	1/4/22	1/10/22	3,903	GM	146.4-147.0	Bankline			R
LaGrange	Pekin Bend (wiggles)	150.4-150.8			159,362	CH	150.0-151.0 R	Bankline/Upland			R
LaGrange	Kingston Mines	145.1-146.0			73,000	CH	144.9-145.6L	Upland			R
Starved Rk	Delbridge Island *	232.2-232.6	1/19/22		9,000	GM	243.7R	Upland			R
Starved Rk	Marseilles Lower	244.2-244.3			6,000	GM	241.7 R	Bankline or Upland			R
Peoria	Upper Henry Island	194.3-194.6			11,000	GM/CM	? ?				R

* Currently operating at this job. ** Dredging completed *** Dredging suspended.

Bankline placement requires OSIT approval. Marseilles Pool requires additional

Total quantities by equipment:

Government Hydraulic - (GH) = 0
 Government Mechanical - (GM) = 18,903
 Contract Hydraulic - (CH) = 287,362
 Contract Mechanical - (CM) = 0
 Hydraulic - (H) = 0
 Total Dredging = **306,265**

Scheduled 306,265
 Unscheduled 0
 TOTAL **306,265**

C = Critical
 ^E = Emergency
 I = Imminent Closure
 R = Routine Dredging

Dresden Lower	271.1-271.3
Bulls Island	240.3-241.2
Delbridge Island	232.3-232.8
Hennepin Power	212.0-212.7
Kingston Mines	145.5-147.5



US Army Corps
of Engineers



ILLINOIS RIVER DMMP ACQUISITIONS

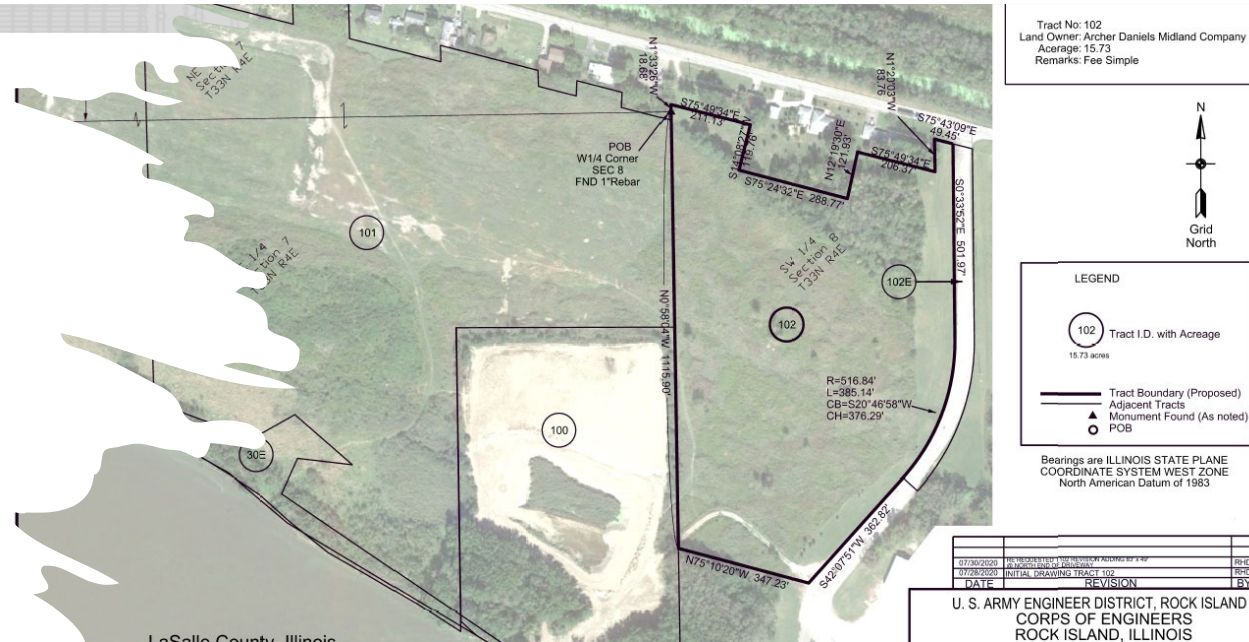


**US Army Corps
of Engineers.**

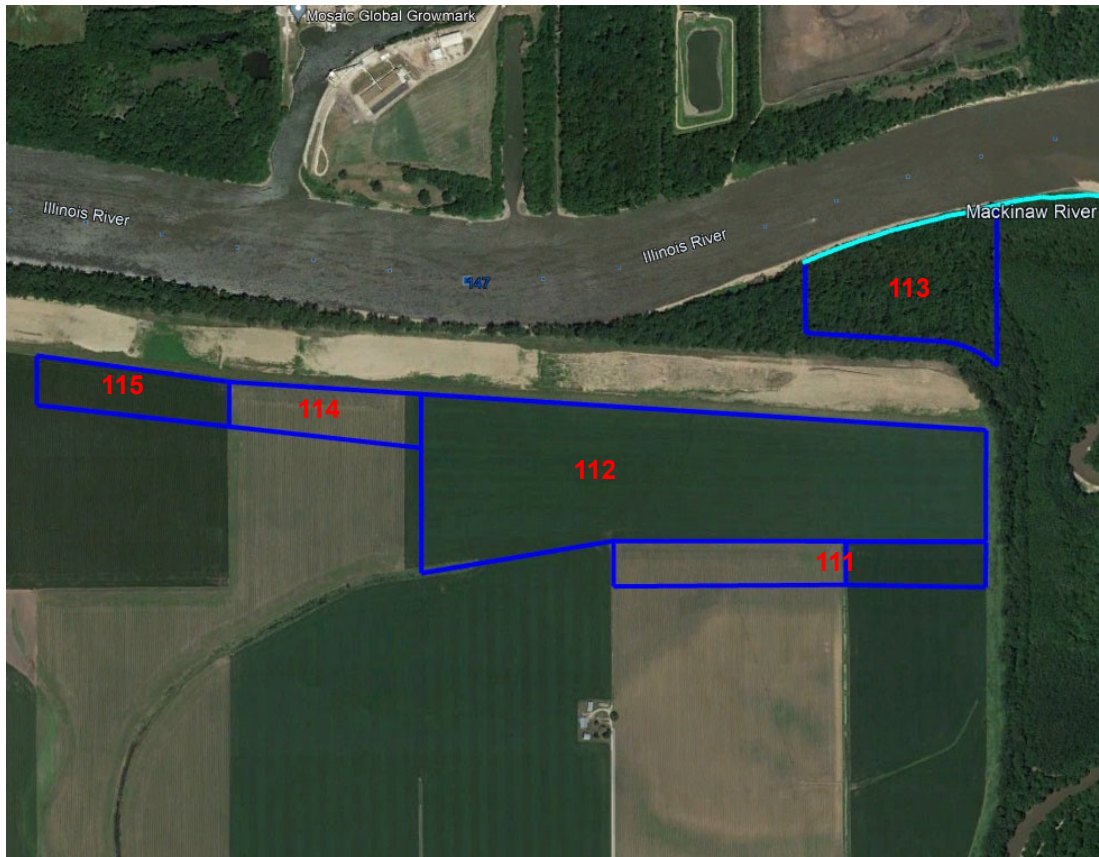


IWW (Starved Rock) - Bulls Island DMMP, Site 3 & 4

- 15.7 acre acquisition completed in 2021
- Entrance road work completed in 2022
- Crews are hauling material for BU staging and residential buffer
- Projected capacity: 530,000 CY



IWW (LaGrange) – Mackinaw River DMMP, Site 10



- Acquisition ongoing
 - Tract 111 – OTS prepared
 - **Tract 112 – closed**
 - **Tract 113 – closed**
 - **Tract 114 – closed**
 - Tract 115 – pending closing
- Initiate construction 2023/2024.
- Additional 2.5M CY capacity when constructed

IWW – Spring Valley DMMP, Site 9

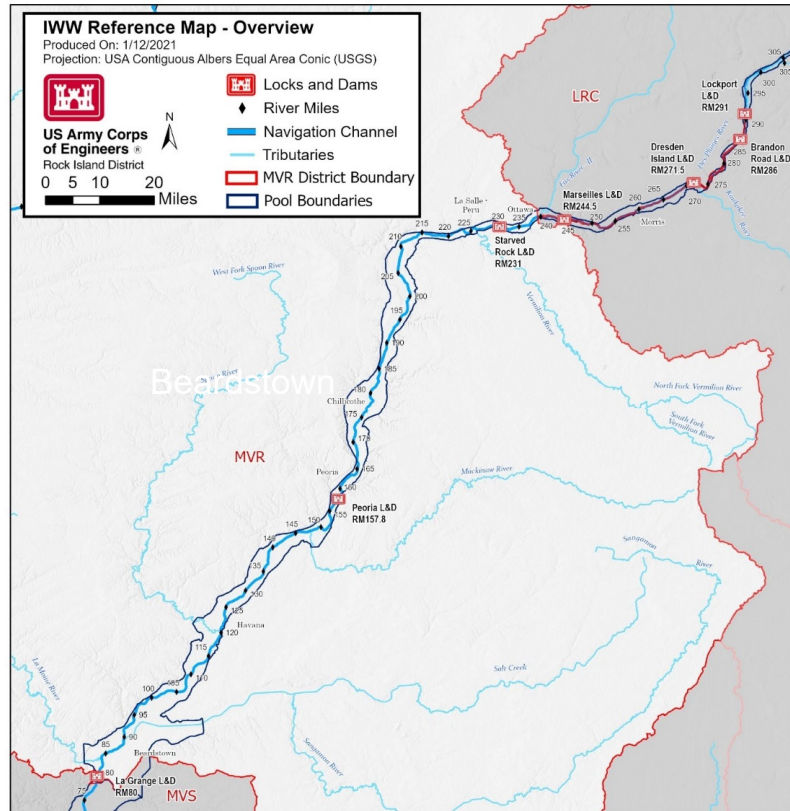
- MATOC Task Order for construction awarded in 2021
- Construction complete August 2022 by DCR Services (Detroit)
- 1st use November 2022
- Capacity: 698,000 CY



US Army Corps
of Engineers



IWW – DREDGED MATERIAL MANAGEMENT PLAN



- Preliminary Assessment completed
- Covers MVR's AOR of IWW
- DMMP Core Team – Kicked off
 - PMP, Public Involvement Plan/Communication Plan
 - Crowd Source Reporter
 - Developing an interactive GIS tool to solicit beneficial use opportunities
 - Integrate 5-Year Regional DMMP



OTHER TOPICS.....

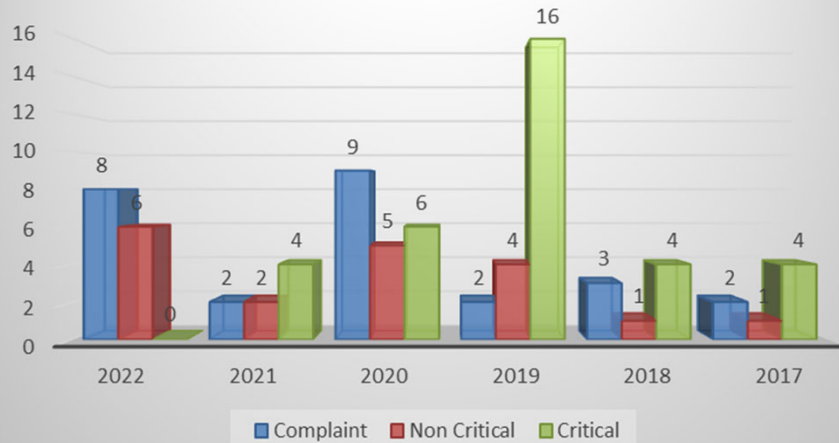


**US Army Corps
of Engineers.**

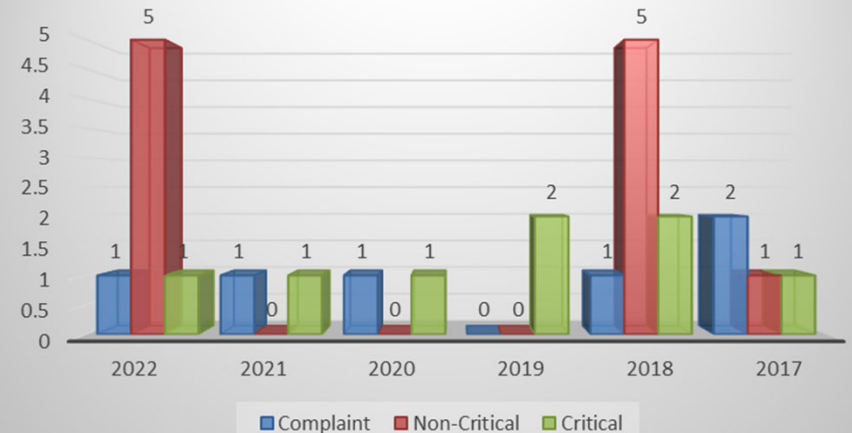


GROUNDING REPORTS

Mississippi River Grounding Reports



Illinois Waterway Grounding Reports

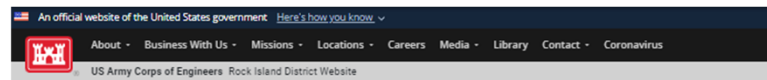


US Army Corps
of Engineers



<https://www.mvr.usace.army.mil/Missions/Navigation/Navigation-Status/>

28



[Home](#) / [Missions](#) / [Navigation](#) / [Navigation Status](#)

Illinois Waterway

Consolidated Lock Closures

The Illinois Waterway, which provides a navigable connection between Lake Michigan and the Mississippi River, includes eight lock and dam sites that are long overdue for significant repairs. To facilitate repairs, the U.S. Army Corps of Engineers, Rock Island District developed a consolidated repair schedule, which included a short closure to locks in 2019 followed by two extended closures in 2020 and 2023. The closures were scheduled to take place simultaneously to lessen impact to commercial navigation as much as possible. Work was successfully completed in 2020 and the District is now preparing for closures in 2023.

All lock and dam facilities on the Illinois Waterway have a single lock chamber for passing vessels. During the scheduled closures, no vessels will be able to pass through the affected locks. **Navigation on the rest of the river, between the locks, will not be impacted by the closures.** Recreational and commercial vessels will be able to navigate within the pools without restriction.



Closure Schedule

****NOTICE**** Should changes to the schedule be needed, they will be posted in RED on this website as soon as they are available.

****NOTE:** Projects and dates listed below are tentative dates and do not necessarily reflect the exact date each lock will close or reopen. The schedule is subject to change due to river levels, weather conditions, health and safety concerns due to COVID-19, project funding, and unknown circumstances that may be discovered during construction.

2023

Brandon Road Lock and Dam - Upper Miter Gate Installation & Machinery Replacement

- Full closure scheduled **120 days** (June 1-Sept. 30, 2023)

Dresden Island Lock and Dam - Upper Miter Gate Installation, Valve Replacement, Machinery Replacement, and Electrical System Replacement

- Full closure scheduled approx. **120 days** (June 1-Sept. 30, 2023)

Marseilles Lock and Dam - **Electrical Crossover Work***

- Full closure scheduled approx. **120 days** (June 1-Sept. 30, 2023)

Starved Rock Lock and Dam - **No Work Anticipated***

* Miter gate machinery replacement at Starved Rock and Marseilles locks has been deferred to a later date. TBD

File Name

